

Installing RESUMate 15

The RESUMate install file ("resumate-15-setup.msi ") can be downloaded from the Support page of our website (www.resumate.com/support). If you have already purchased RESUMate, there is also a direct download link in the shipment e-mail that contained your Registration Name and Registration Code.

Hardware Requirements

RESUMate requires Windows Vista or higher to run. It will work fine on Windows 7, Windows 8, and Windows 8.1. For multi-user installations, we recommend wired 100 Mb Ethernet or wireless 802.11n or better. For networks of five or more users, we recommend wired 1 Gb Ethernet.

Single User Install

Run the install file you downloaded from www.resumate.com and follow the on-screen instructions. (*Mostly you'll just be clicking the "Next" button.*) That's all there is to it.

Local Area Network (LAN) Installation

If you are installing RESUMate on a LAN, first you'll need to decide which PC in your office will act as the file server. You can have a dedicated file server or you can use one of your user's PCs as the file server. *If you are sharing RESUMate with five (5) or more users, we recommend having a dedicated file server.*

If you have a dedicated file server (a PC where data is stored but which is not used by anyone to run RESUMate):

1. Run the RESUMate install file on the server and enter your Registration Name and Registration Code. This will install the program and create a "RESUMate" data folder in the main Windows "Documents" folder.

NOTE: Your server will NOT count as a RESUMate user license. Only PCs where RESUMate is being actively used count towards your user limit.

2. When prompted, select the "My RESUMate Data.rdb" file in the C:\Users\UserName\ Documents\ RESUMate folder. You can now close RESUMate on your server.

Note to IT People: If you want to change the name of the .rdb file (for example, to "Company Name.rdb" or something similar), do so before installing RESUMate on the workstations.

3. Once the install has finished, you'll need to share the new RESUMate folder on your network and allow network users full access/permissions (read/write AND create/destroy). If you are unsure how to share the folder, please see "Basic Folder Sharing" on page 3 of this document.

4. Once the folder is shared and visible on the network, run the RESUMate install file on each PC where RESUMate will actually be used. After you enter your Registration Name and Registration Code, RESUMate will ask for the location of the shared database file. Select the "My RESUMate Data.rdb" file you shared on your server. RESUMate will automatically set all of your data files to the same network location.

If you do not have a dedicated file server:

1. Run the RESUMate install file on the PC which will act as the server and enter your Registration Name and Registration Code.
2. When prompted, select the "My RESUMate Data.rdb" file in the C:\Users\UserName\Documents\RESUMate folder.

Note to IT People: If you want to change the name of the .rdb file (for example, to "Company Name.rdb" or something similar), do so before installing RESUMate on the other workstations.

3. Once the install has finished, you'll need to share the new RESUMate folder on your network and allow network users full access/permissions (read/write AND create/destroy). If you are unsure how to share the folder, please see "Basic Folder Sharing" on page 3 of this document.
4. Once the folder is shared and visible on the network, run the RESUMate install file on the other PCs where RESUMate will be used. After you enter your Registration Name and Registration Code, RESUMate will ask for the location of the shared database file. Select the "My RESUMate Data.rdb" file you shared on your server. RESUMate will automatically set all of your data files to the same network location.

Remote Desktop Protocol (RDP) / Windows Terminal Services Installation

The same RESUMate install file can be used when installing RESUMate in a virtual desktop environment. Be sure to go through the Add/Remove Programs option of Control Panel (or its equivalent) when running the install file. DO NOT simply run the file without going through Control Panel or RESUMate will not run on other user accounts.

In most versions of Windows Server, the Control Panel will contain an option to "*Install Application on Remote Desktop*" that will allow you to browse to the "resumate-15-setup.msi" file. You can also use the command line to temporarily set the server to install mode with "Change User /Install" (no quotes). Once the application is installed, you'll need to switch out of install mode with "Change User /Execute" (again, no quotes).

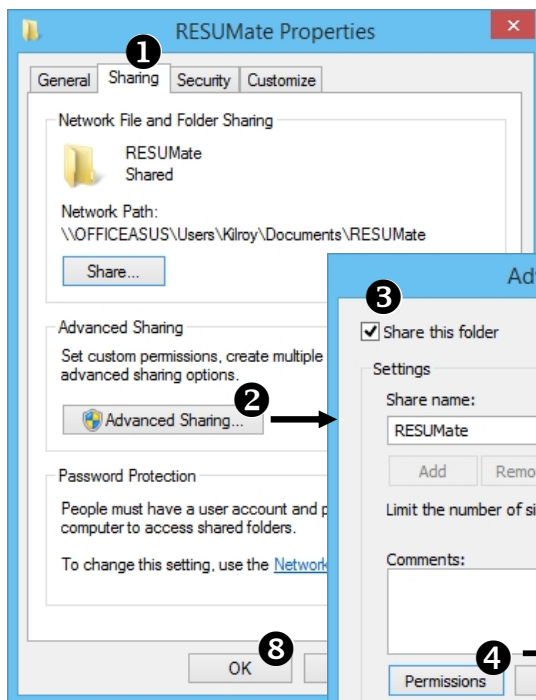
Basic Folder Sharing

In Windows 7, 8, and 8.1, you'll need to use the "Advanced Sharing" options to share your RESUMate data folder with full permissions.

Step 1: Right click on your RESUMate folder and select "Properties".

Step 2: ▼ **On the Properties Window...**

1. Select the "Sharing" tab.
2. Click the "Advanced Sharing" button.



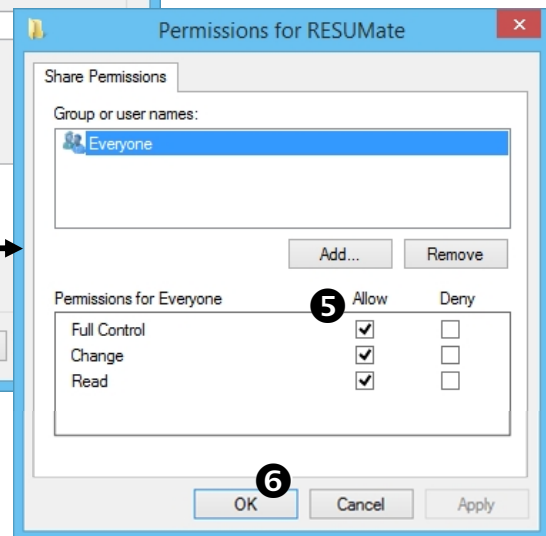
▼ **On the Advanced Sharing Window...**

3. Check the "Share this folder" box.
4. Click the "Permissions" button.

▼ **On the Permissions Window...**

5. Check to allow "Full Control".

Note: All 3 boxes (*Full Control, Change, and Read*) should be checked.



Close Each Window...

6. Click "OK" to close the Permissions window.
7. Click "OK" to close the Advanced Sharing window.
8. Click "OK" to close the Properties window.

Step 3: Restart your PC. Restart the other PCs on your network. *The folder should now be properly shared with full permissions and visible on the other PCs.*