

RESUMate 16

Installation Guide

This document provides step-by-step instructions for installing RESUMate 16 and the associated Google Chrome extension.

For users with a prior version, there is no conversion step needed. Your data will automatically appear when RESUMate 16 is opened for the first time. Installing RESUMate 16 will not affect or change your existing database file. However, it is always a good idea to make a backup file prior to installing new software.

NOTE: For instructions on how to use the new features found in RESUMate 16, please see our **RESUMate 16 New Features Guide**.

Table of Contents

Installing RESUMate 16	2
Installing the RESUMate Web Profile Tool	3



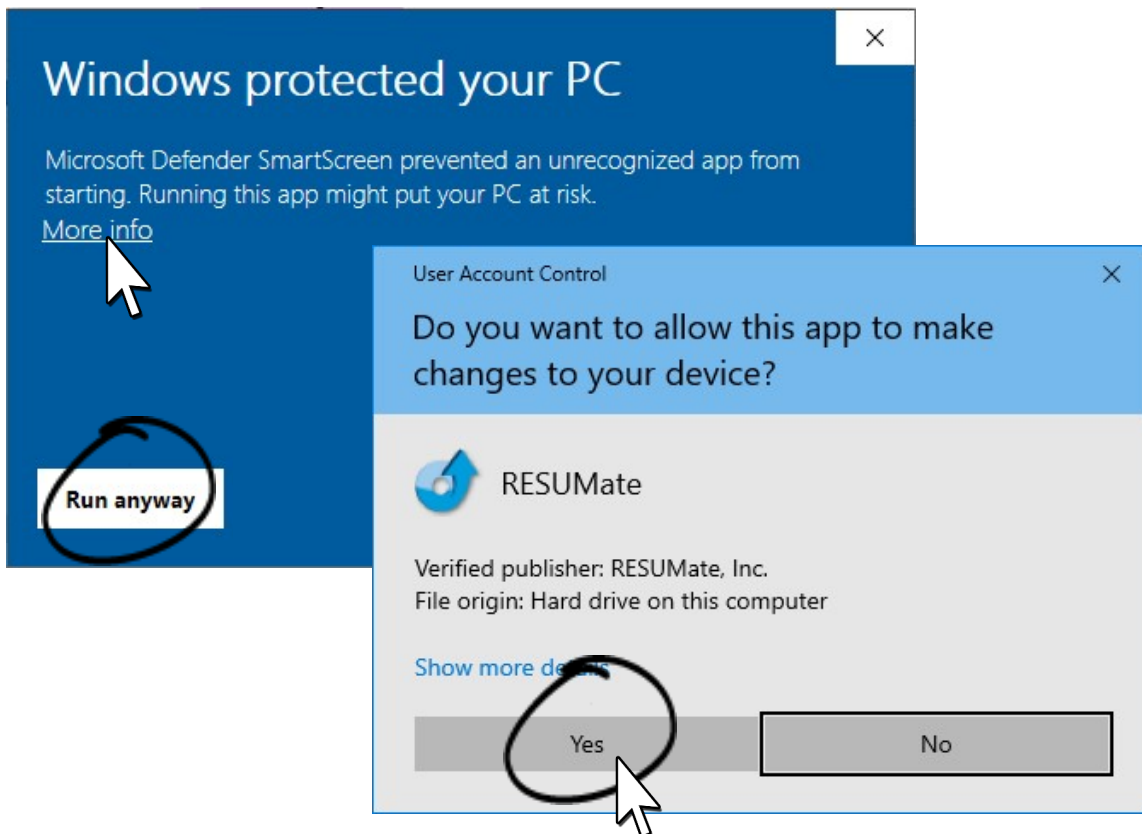
Installing RESUMate 16 is a two step process:

(1) Install RESUMate 16 on your PC; and (2) Install the RESUMate Profile Tool in Google Chrome and/or Microsoft Edge.

Step 1: Installing RESUMate 16

There is a direct download link for RESUMate 16 on the [Support & Downloads page](#) at our website. [If you received this PDF as an attachment, there is also a link in the email.]

You will need to run the install file on all PCs on which you will be using RESUMate. Once the installation program begins, you will probably see a User Account Control or other security warning:



Click "More Info" followed by "Run Anyway" or just "Yes" to allow the installer to continue. Make sure that the listed publisher is "RESUMate, Inc". The installation will proceed automatically, and RESUMate 16 will open with all of your data from the previous version.

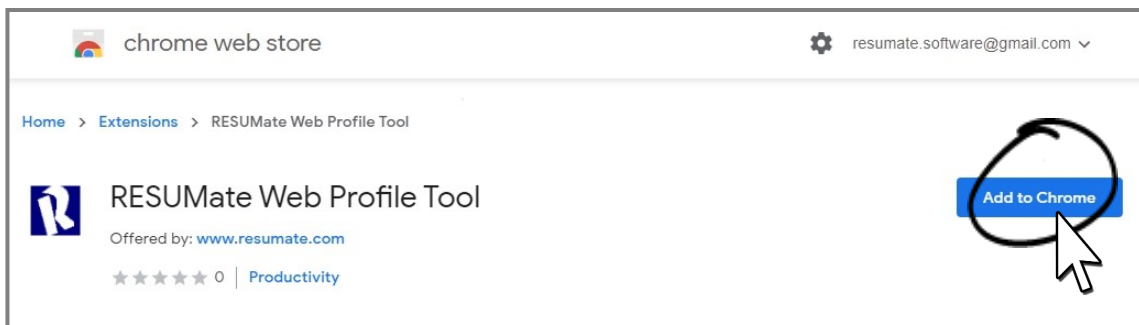
NOTE: Depending on your system, the installer may ask to restart your PC when it is finished.

Once the installation is complete, you'll have a **RESUMate 16 icon** in your **Start menu** and the **RESUMate 16 "App"** accessible from your **Windows search box**.

Step 2: Installing the RESUMate Profile Tool in Chrome and Edge.

RESUMate 16 uses a browser “extension” compatible with Google Chrome and Microsoft Edge to copy LinkedIn profiles to the Windows Clipboard. To use the LinkedIn importer, you must install this extension in one of these two browsers.

To install the RESUMate extension, visit the Chrome Web Store in Chrome/Edge and search for “RESUMate” or just **click this link:** <https://chrome.google.com/webstore/detail/resumate-web-profile-tool/kpenochakingoeejgellbdpgdigjpem>.




From the RESUMate Web Profile Tool page in the Chrome Store, just click “**Add to Chrome**”.

Microsoft Edge Users: You may see a blue banner at the top with a button to “Allow extensions from other stores”. Click to “**Allow**.”

NOTE: You do NOT need to set Chrome or Edge as your default browser to use RESUMate 16. You can continue to use another browser for most tasks. However, to copy profiles from LinkedIn you will need to visit LinkedIn with either Chrome or Edge.

Chrome Users: Once the extension has been installed, you can ‘pin’ it so that it’s visible in the upper-right corner whenever Chrome is open.

Click the **Puzzle Piece Icon** in the upper-right corner of your browser, followed by the **Pin Icon**.

Clicking this “R” icon  now automatically copies any LinkedIn profile on your screen to the Windows Clipboard.

